

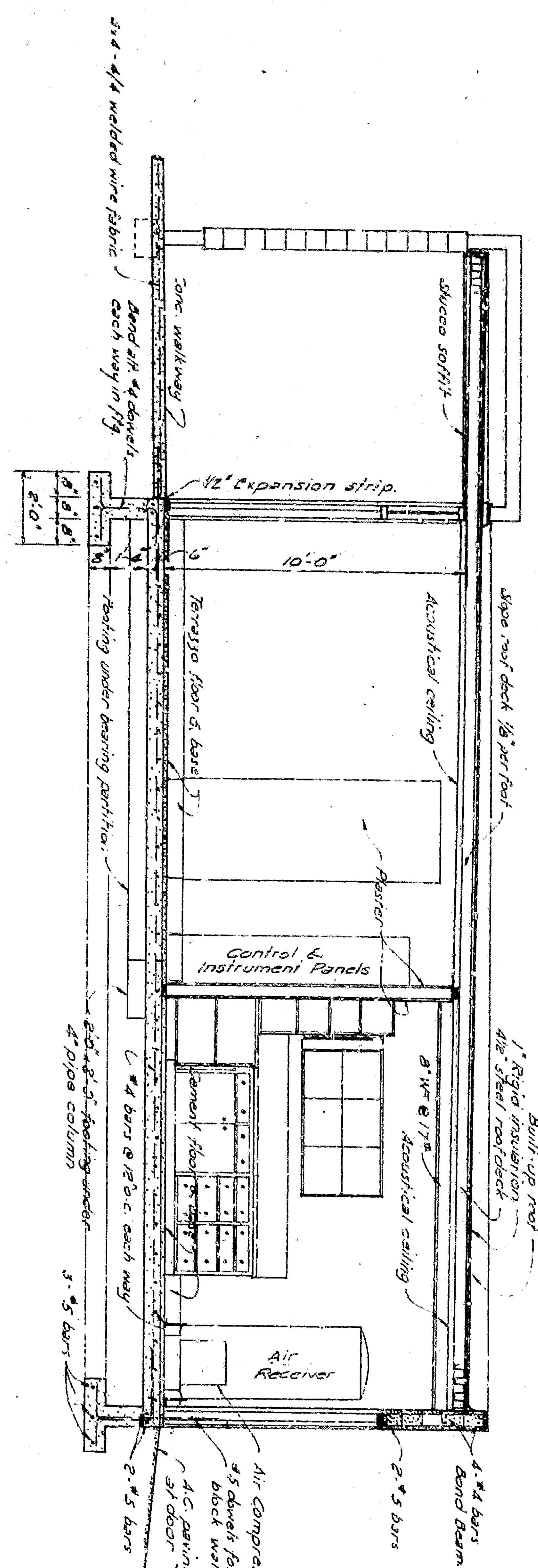
SECTION D-D
Scale: 1/8" = 1'-0"

SECTIONAL DETAIL: ENGINE BASES
Scale: 1/4" = 1'-0"

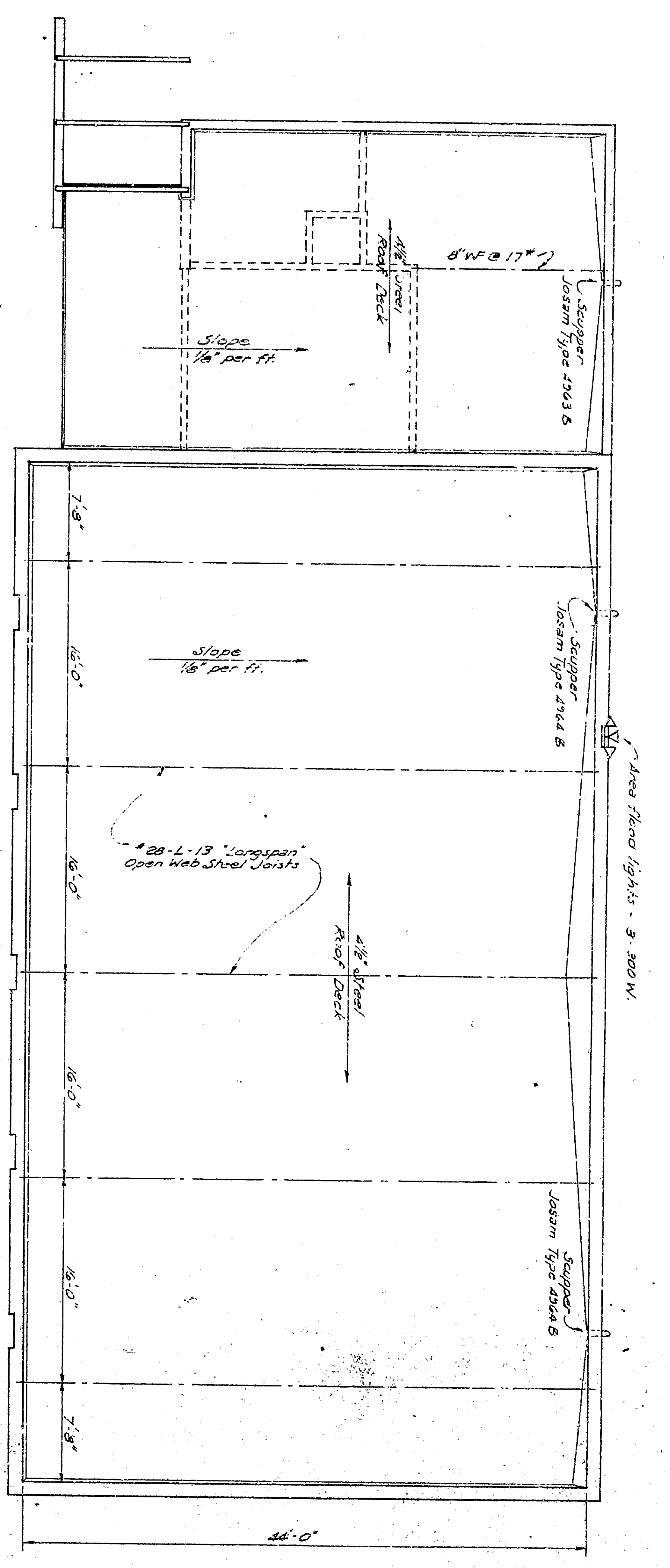
ELECTRICAL PLAN
Scale: 1/8" = 1'-0"

Notes: 1. All electrical work shall be in accordance with the National Electrical Code, 1933 Edition, as amended, and the local codes of the City of San Bernardino, California. 2. All electrical work shall be done in accordance with the specifications of the manufacturer of the equipment. 3. All electrical work shall be done in accordance with the specifications of the manufacturer of the equipment. 4. All electrical work shall be done in accordance with the specifications of the manufacturer of the equipment. 5. All electrical work shall be done in accordance with the specifications of the manufacturer of the equipment.

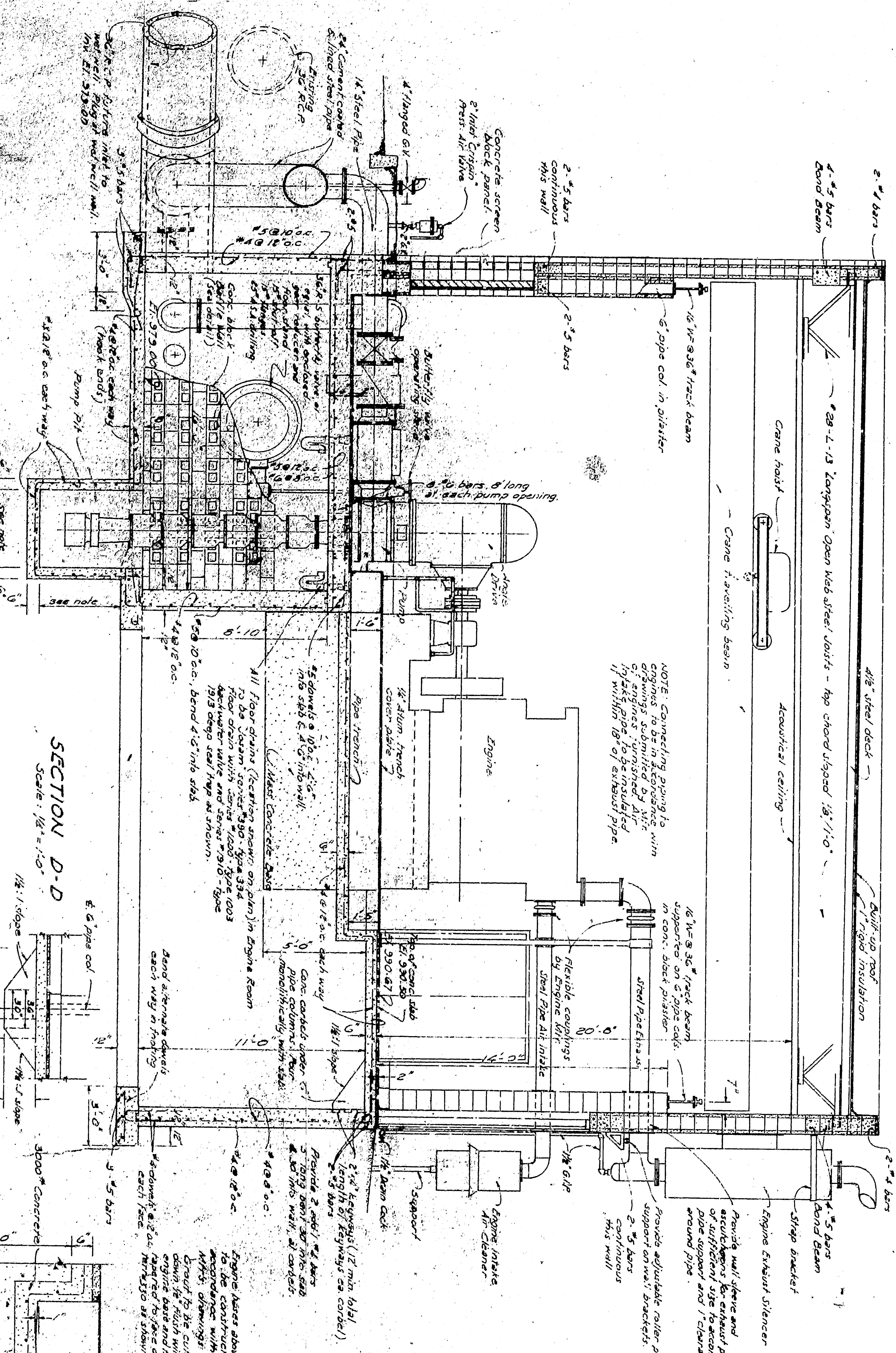
AFFLUENT REGULATION
PUMPING STATION
SAN BERNARDINO
CALIFORNIA



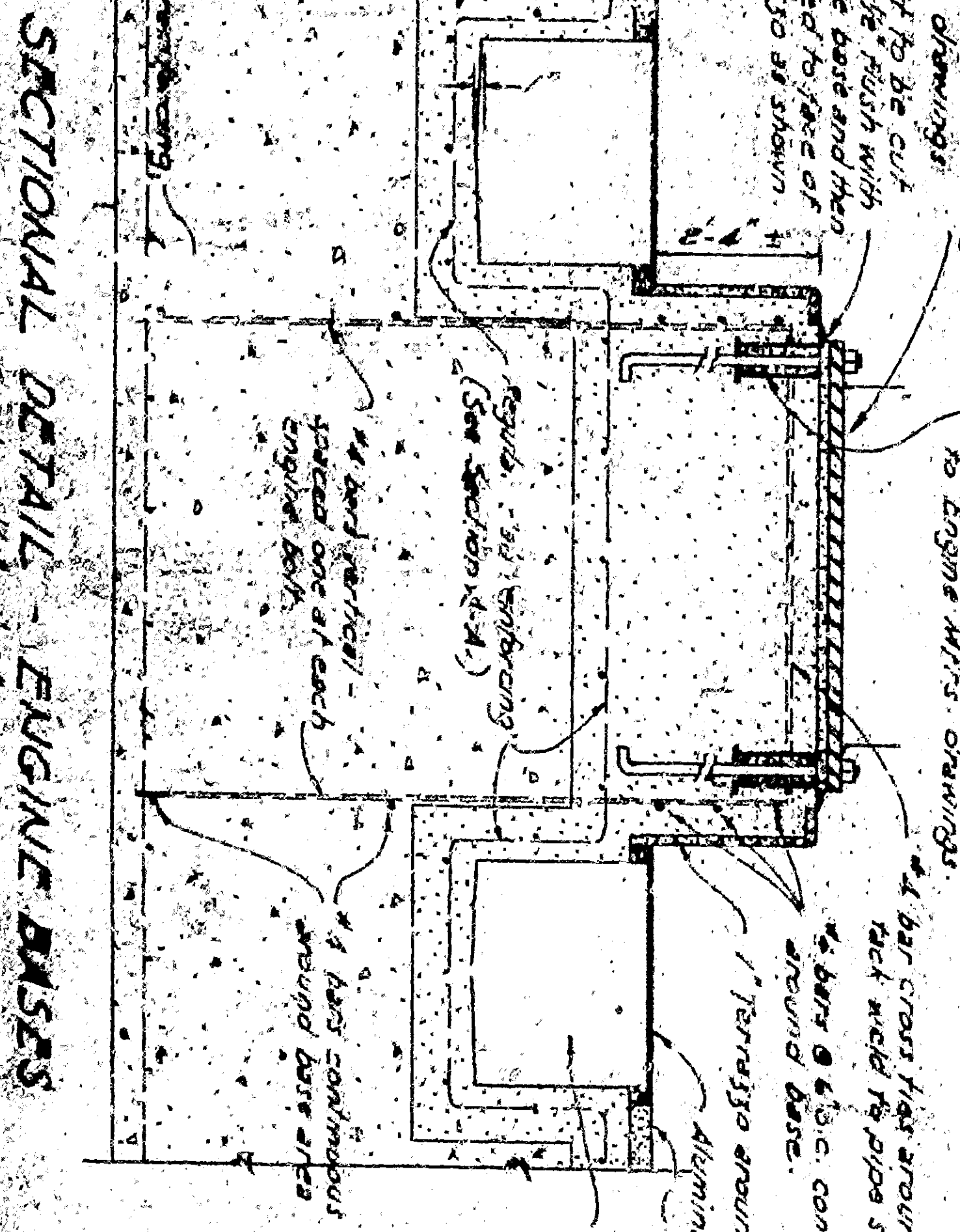
SECTION C-C
Scale: 1/8" = 1'-0"



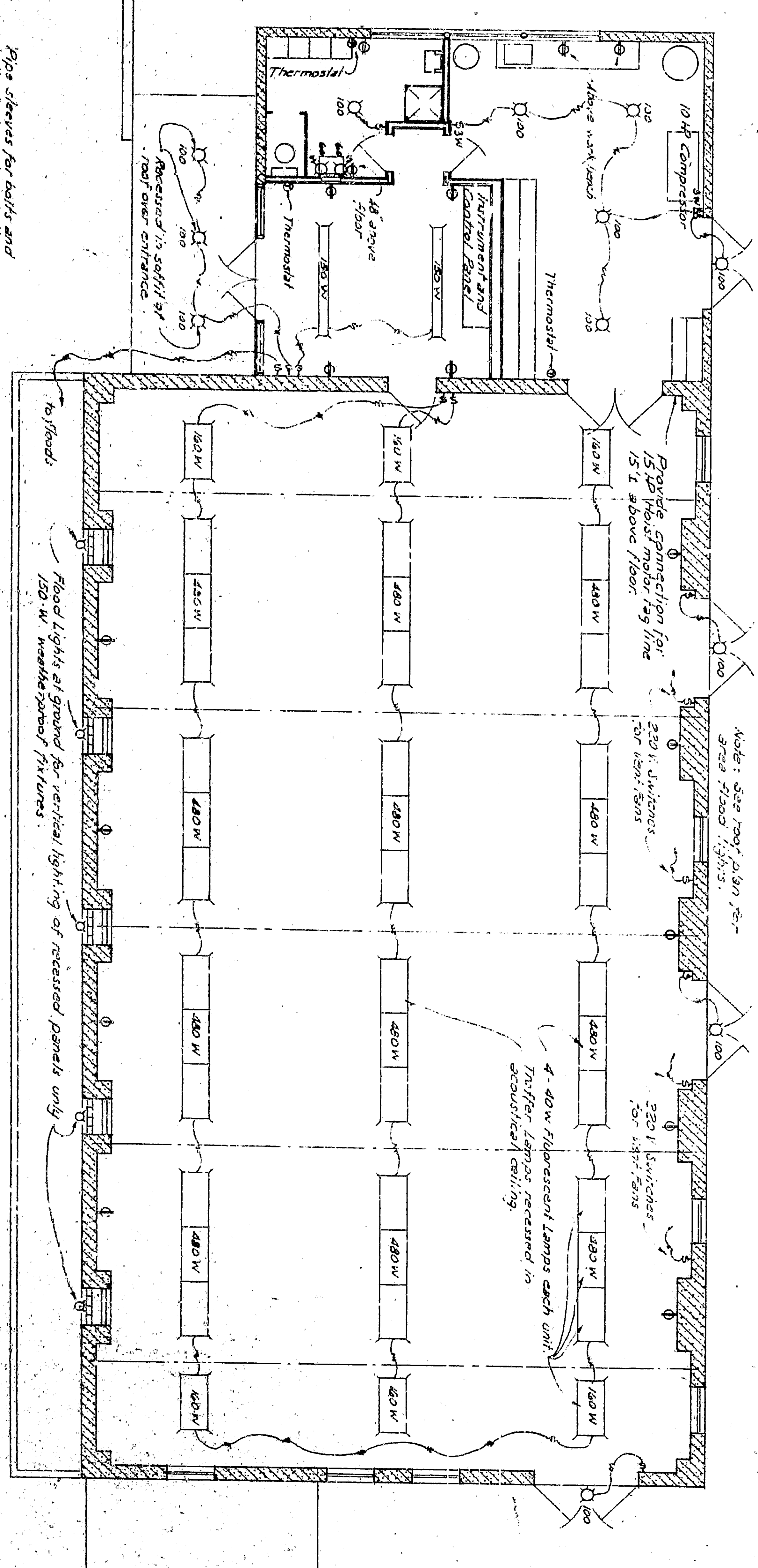
ROOF PLAN
Scale: 1/8" = 1'-0"



SECTION D-D
Scale: 1/8" = 1'-0"



SECTIONAL DETAIL ENGINE BASES
Scale: 1/4" = 1'-0"



ELECTRICAL PLAN
Scale: 1/8" = 1'-0"

NOTE: Where floor joists are in a configuration such as shown, the top of joists shall be enclosed in a 2x4 stud wall, spaced at 24 inches on center, and filled with 1/2 inch rigid insulation. This wall shall be constructed in accordance with the manufacturer's instructions.

AFFLUENT REGULATION PUMPING STATION SAN BERNARDINO CALIFORNIA

DATE: 10/1/50